

SMART PROGRAM

AT A GLANCE

PUBLISHED OCTOBER 2019

DISTRICT 5



What's Happening in District 5

Primary Renovations Snapshot



Data through September 2019

DISTRICT 5

SMART PROGRAM AT A GLANCE

The SMART Bond Program focuses on improving schools and the educational experience of students and faculty at 232 SMART funded Broward County Public Schools, in the overarching categories of Safety, Music & Art, Athletics, Renovation, and Technology.

NEWLY IN CONSTRUCTION

Primary Renovation projects that received approval to begin construction.

- Dillard 6-12 School
- Sunland Park Academy
- Walker Elementary School

FEATURED RENOVATIONS



**ATLANTIC TECH
COLLEGE,
ARTHUR ASHE JR.
CAMPUS**

The existing roof on Building 1 & 2 has been demolished and a temporary one has been installed.



**SUNLAND PARK
ACADEMY**

Roofing improvements are in progress on Buildings 1, 2 & 3, while fire alarm upgrades are pending commencement.



**CASTLE HILL
ELEMENTARY
SCHOOL**

Installation of new temporary roof has been completed. Upgrades to the restrooms and fire alarm system are in progress.



FEATURED RENOVATIONS (contd.)



DR. MARTIN LUTHER KING MONTESSORI ACADEMY

Air handling units have been installed and lines for a new chiller have been completed. Roofing improvements are pending commencement.



LAUDERDALE LAKES MIDDLE SCHOOL

The media center has been completed with new flooring and furniture. Five new HVAC air handlers were installed. Roofing and fire alarm wiring and conduit installation are in progress.



SCHOOL CHOICE ENHANCEMENT PROGRAM

As part of the School Choice Enhancement Program (SCEP), schools are allocated \$100,000 to spend on custom improvements to their campuses and curriculums.

SCEP DISTRICTWIDE

39 Schools underway or complete

8 Schools Complete

24 Schools in Implementation

7 Schools in Planning/Design

SPOTLIGHT ON SCEP



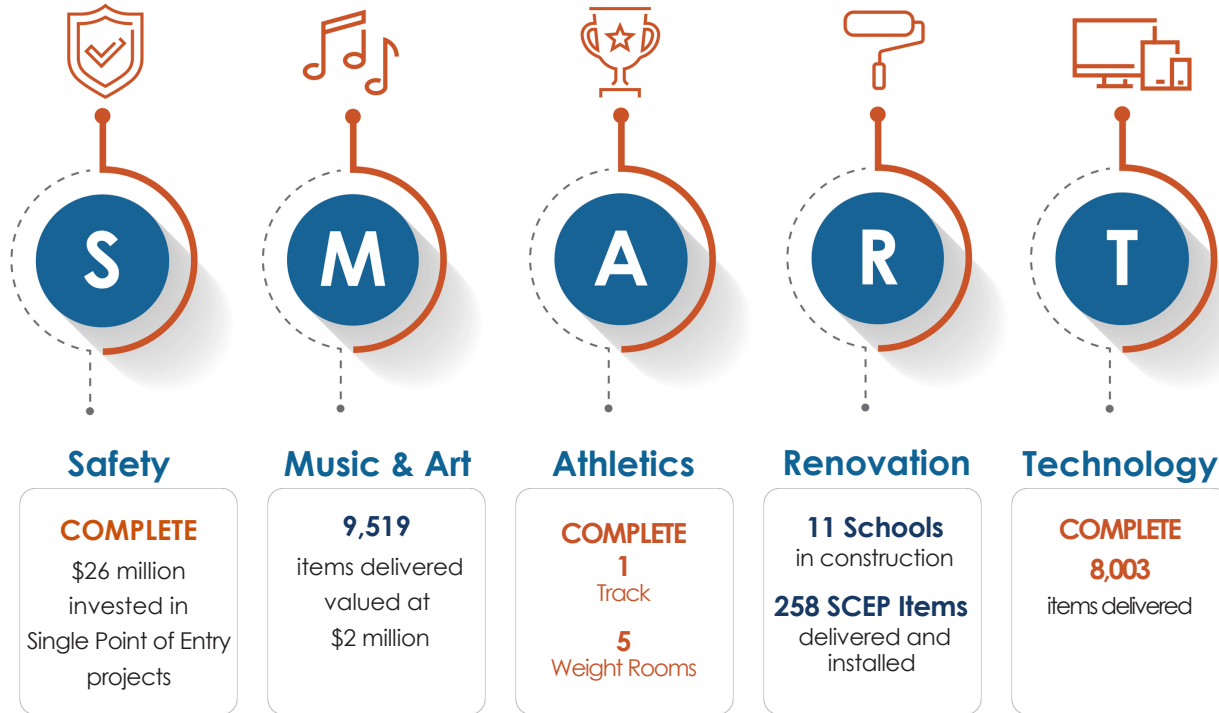
ORIOLE ELEMENTARY SCHOOL

Items Purchased Include:

Classroom rugs, student tables and chairs, two-way radios, projectors, outdoor mats, teacher chairs, cafeteria sound system, safety cones, vests, storage carts, reflective parking lot posts, signs, and murals.



SMART by the Numbers | **District 5**



STAY INFORMED

www.browardschools.com

VISIT

BrowardSchools.com/SMARTFutures

EMAIL

SMARTFutures@BrowardSchools.com

FOLLOW US!

 **@BCPS_SMART**

 **/BCPSSMART**

 **@BCPS_SMART**

**11 SCHOOLS
IN CONSTRUCTION**

- **Atlantic Technical College, Arthur Ashe, Jr. Campus**
- Bair Middle School
- **Banyan Elementary School**
- Boyd H. Anderson High School
- Broward Estates Elementary School
- **Castle Hill Elementary School**
- **Dillard 6-12 School**
- Dillard Elementary School
- **Discovery Elementary School**
- **Dr. Martin Luther King, Jr. Montessori Academy**
- Endeavor Primary Learning Center
- Horizon Elementary School
- Larkdale Elementary School
- **Lauderdale Lakes Middle School**
- Lauderdale Manors Early Learning and Resource Center
- **Lauderhill 6-12 STEM-MED Magnet School**
- **Lauderhill Community School at Park Lakes Learning Center** (f.k.a: Castle Hill Annex)
- **Lauderhill-Paul Turner Elementary School**
- Mirror Lake Elementary School
- North Fork Elementary School
- Oriole Elementary School
- Park Lakes Elementary School
- Parkway Middle School
- Peters Elementary School
- Piper High School
- **Plantation Elementary School**
- Plantation High School
- Plantation Middle School
- **Rock Island Elementary School**
- Royal Palm STEM Museum Magnet (f.k.a. Royal Palm Elementary School)
- **Sunland Park Academy**
- Thurgood Marshall Elementary School
- Village Elementary School
- **Walker Elementary School**
- Welleby Elementary School
- Westpine Middle School
- William E. Dandy Middle School
- Wingate Oaks Center

*Bold schools are in construction

**Projects are sometimes separated in order to expedite timing. This may lead to a school being counted more than once in phase tracking.